

Safe Confined Space Awareness

Before any associate works in a permit space, their employer must train authorized entrants, attendants, and entry supervisors to understand the hazards in the permit space and the methods used to protect against those hazards.

****This toolbox talk does not adequately train associates to enter a confined space****

What is a Confined Space?

Workplaces contain spaces that are considered "confined" because their design hinders the activities of any associates who must enter, work in, and exit them.

A confined space is an area which:

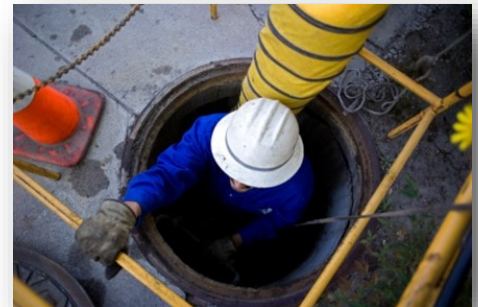
- Is large enough that you can enter it,
- Has limited or restricted means for entry or exit, and
- Is not designed for continuous human occupancy.



What is a Permit Required Confined Space?

A permit for entry into a confined space is required when the space meets the above criteria and has one or more of the following:

- Contains or has the potential to contain a hazardous atmosphere.
- Contains a material that has the potential for engulfing someone.
- An area where a person could become trapped or suffocated by converging walls or sloping floors.
- Contains any other recognized hazard.



Associated Hazards

Flammable Atmospheres:

Can arise from an enriched oxygen atmospheres, vaporization of flammable liquids, byproducts of work, chemical reactions and concentrations of combustible dusts.

Toxic Atmospheres:

Toxic substances such as gases, vapors, and airborne dust may be present in the space or a result of the work being done.

Asphyxiating Atmospheres:

Reduction of oxygen due to rusting, organic debris,

gases and conditions inside confined space is a suffocation hazard.

Mechanical:

Equipment must be locked out before workers enter to prevent accidental start-up while they work in a confined space.

Physical:

Hazards including thermal effects (heat and cold), noise, vibration, radiation, and fatigue while working in a confined space.